

EAP104/EAP104 Lite

TIP OPENWIFI INDOOR WALL-PLATE Wi-Fi 6 ACCESS POINT



INTRODUCTION

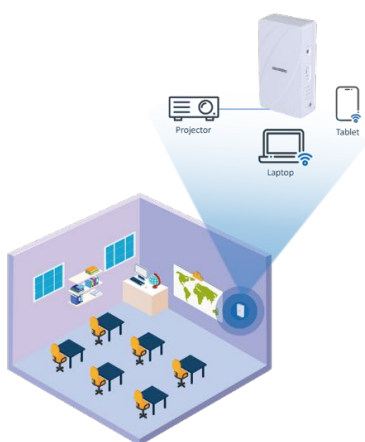
The EAP104 and its compact counterpart, the EAP104 Lite, are enterprise-grade, concurrent dual-band Wi-Fi 6 indoor wall-plate access points for hospitality, apartment buildings, or MDUs. The EAP104 supports 2x2:2 uplink and downlink MU-MIMO between the AP and multiple clients, with up to 3 Gbps aggregated data rate. The EAP104 is equipped with Bluetooth Low Energy (BLE)* radio, ZigBee*, and pass-through capabilities, enabling value-added applications such as iBeacon, and providing versatile wired and wireless connectivity.

For those seeking a more streamlined solution, the EAP104 Lite maintains the impressive connectivity and speed of the EAP104 in a lighter package. Ideal for MSPs delivering managed services, it's a thoughtful alternative that doesn't compromise on performance.

The TIP OpenWiFi EAP104 and EAP104 Lite hardware are pre-installed with TIP's Open AP software, providing a flexible platform for different network use cases and requirements.



EU/US Junction Box Wall-Plate for Hotel



Wall Mount for Classroom



Desk Mount for Meeting Room/SMB

HIGHLIGHTS

- Wi-Fi 6 2x2 uplink and downlink MU-MIMO with up to 3 Gbps data rate
- 1 uplink port, 4 LAN ports, plus 1 pass-through port
- Enterprise-grade wireless security
- Bluetooth Low Energy (BLE) and ZigBee support*
- PoE Out in an AP*

SPECIFICATIONS

PHYSICAL	
CPU	<ul style="list-style-type: none">IPQ5018
Flash	<ul style="list-style-type: none">NOR: 16MBNAND: 128MB
Memory	<ul style="list-style-type: none">512MB
Power	<ul style="list-style-type: none">DC Input: 12V / 2.0A (power adapter optional)PoE: 802.3at/af compliant (PoE injector optional)
Dimensions	<ul style="list-style-type: none">160.5 mm (L) x 89.5 mm (W) x 34 mm (H)
Weight	<ul style="list-style-type: none">0.45 kg
Interfaces	<ul style="list-style-type: none">Uplink: 1 x 10/100/1000Base-T Ethernet, Auto MDIX, RJ-45 with standard PoE inputLAN: 4 x 10/100/1000Base-T Ethernet, Auto MDIX, RJ-45 (LAN4 supports 802.3af PoE out up to 10W while the system is powered by 802.3at)*Pass-Thru: 1 x pass-through port from rear to bottomConsole: 1 x Micro-USB port
Buttons	<ul style="list-style-type: none">Restart / Reset
LED Indicator	<ul style="list-style-type: none">Power, Cloud Status, 5G-WiFi, 2.4G-WiFi, Uplink
Restart / Reset	<ul style="list-style-type: none">Restart / Reset
Environmental Conditions	<ul style="list-style-type: none">Operating Temperature: 0°C (32°F) to 45°C (113°F)Operating Humidity: 5% to 95% non-condensing
Power Consumption	<ul style="list-style-type: none">Est. 12.9W max.
Antenna	<ul style="list-style-type: none">Type: 5 x Built-in antenna (2 x 2.4 GHz, 2 x 5 GHz, 1 x BLE)Gain: 3.9 dBi (2.4 GHz), 5.2 dBi (5 GHz), 4 dBi (BLE)
Mounting	<ul style="list-style-type: none">Wall-plate (standard bracket), wall mount (standard bracket), desktop (optional stand)
Anti-theft	<ul style="list-style-type: none">1 x screw lock

*EAP104 Lite does not support BLE/Zigbee and PoE out hardware features

WI-FI	
Standards	<ul style="list-style-type: none">802.11a/b/g/n/ac/ax (Wi-Fi 6)Concurrent dual-band 2.4 & 5 GHz
Supported Data Rates	<ul style="list-style-type: none">802.11b: 1, 2, 5.5, 11 Mbps802.11a/g: 6, 9, 12, 18, 24, 36, 48, 54 Mbps802.11n: 6.5 – 300 Mbps (20 / 40 MHz)802.11ac: 6.5 – 867 Mbps (20 / 40 / 80 MHz)802.11ax: 3.6 – 574 Mbps (2.4 GHz, 20 / 40 MHz)802.11ax: 3.6 – 2402 Mbps (5 GHz, 20 / 40 / 80 / 160 MHz)
Radio Chains	<ul style="list-style-type: none">2 x 2
Spatial Streams	<ul style="list-style-type: none">2; Uplink and downlink MU-MIMO support

Aggregate Conducted Transmit Power ¹	<ul style="list-style-type: none">2.4 GHz: 22 dBm²5 GHz: 22 dBm²
Channelization	<ul style="list-style-type: none">2.4 GHz: 20, 40 MHz5 GHz: 20, 40, 80, 160Mhz
Frequency Range	<ul style="list-style-type: none">2.401 – 2.483 GHz³5.170 – 5.835 GHz³
Operating Channels	<ul style="list-style-type: none">2.4G: 1 – 11 (US), 1 – 13 (Europe, Japan)5 GHz³: 36 – 165 (US), 36 – 140 (Europe), 36 – 144 (Japan)
ESSIDs	<ul style="list-style-type: none">Up to 16 per radio (32 total)
Certifications	<ul style="list-style-type: none">FCC, IC, CE, TELEC, VCCI, NCC, BSMI, UKCA, UL2043 Plenum Rating

1: Aggregated across MIMO chains and does not contain antenna gain.
2: Maximum power is limited by local regulatory requirements.
3: Bands and channels are restricted by local regulatory requirements. Refer to latest certificates for details.

PERFORMANCE	
Physical Data Rate	<ul style="list-style-type: none">Up to 574 Mbps (2.4 GHz)Up to 2402 Mbps (5 GHz)

ORDERING INFORMATION		
Part Number	Description	Remark
FIKECP104004E	EAP104 (TL)	EAP104 Lite does not support BLE/Zigbee and PoEout hardware features
123400002643A	Optional desktop stand bracket	Sold in quantities of 10 per box
131500000258A	Optional US/JP power adapter	Quantities of 96 in a carton
131500000259A	Optional EU power adapter	Quantities of 72 in a carton
131500000262A	Optional UK power adapter	Quantities of 72 in a carton
131500000338	Optional power adapter with US/JP, EU, UK, AU plugs	Sold in quantities of 10 per box

Contact Us

For more information, please contact us: openwifi@edge-core.com

EC Open Wi-Fi Page

<https://wifi.edge-core.com/openwifi>

EC Open Wi-Fi User Forum

<https://openwifi.edge-core.com/>